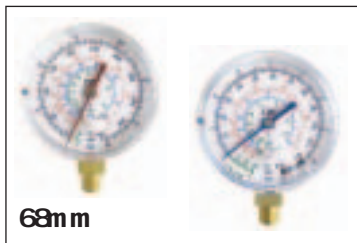


### Spare Part Kits /Pièces de Rechange /Ersatzteile

Item /Réf /Teilnr	Description /Description /Beschreibung
M2XRK	Diaphragm 2 valve repair kit /Kit de réparation 2vannes /Membrandichtungssatz für 2-Ventil Prüfarmatur
M4XRK	Diaphragm 4 valve repair kit /Kit de réparation 4vannes /Membrandichtungssatz für 4-Ventil Prüfarmatur
M5XRK	Diaphragm 5 valve repair kit /Kit de réparation 5vannes /Membrandichtungssatz für 5-Ventil Prüfarmatur
MXMH	Hook assembly /Crochet à suspendre /Aufhänghacken
M4XHA	Hose end closure bracket (4-V) /plaquette de suspension pour flexibles (4-V) /Schlauchhalterung
MXX	Manifold knob with labels /Bouton pour manifold avec autocollants /Knopf der Prüfarmatur
42-754	Packing nut for diaphragm manifold valves /Ecrou de joint pour diaphragme manifold /Muttern für Membrane Prüfarmatur
90008	Plastic carrying case for 2vlv manifold /Coffre portatif pour manifold à 2vannes /Tragekoffer für 2V-Prüfarmatur
MXPK	Replacement handle - piston manifold /Manette de remplacement - manifold à piston /Austausch Handgriff für Kolben Prüf.
MXPV	Piston valve assembly /Ensemble valve à piston/Zusammenbausatz für Kolben-Prüfarmatur
MXPVO	Piston valve seals kit /Kit joints pour valve à piston /Dichtungssatz für Kolben-Prüfarmatur
90011	Plastic Carrying case for 4 valve manifold /Coffre portatif pour manifold à 4vannes /Tragekoffer für 4V-Prüfarmatur

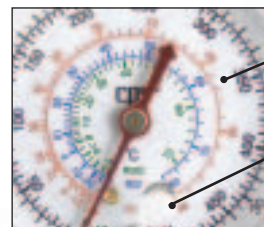
### Replacement Gauges /Manomètres de remplacement /Austauschbare Manometer

Diam. Ø	Class 1.6 Bourdon type								Class 1.0 Bellows type				
	68mm	68mm	68mm	68mm	80mm	80mm	80mm	80mm	80mm	80mm	80mm	80mm	80mm
Symbol	G	F	V	O	J	A	N	K	E	Q	W	U	L
Pressure units Unités dépress. Druckeinteilung	BAR/PSI	BAR/PSI	BAR/PSI	BAR/PSI	BAR	BAR/PSI	BAR/PSI	BAR	BAR	BAR	BAR	BAR	BAR
Temp units Unités temp. Temp. Einteilung	°C	°C	°C	°C	°C	°C	°C	°C	°C	°C	°C	°C	°C
Refrig. Scales Echelle réfrig. Kältemittel-Skala	R12 R22 R502	R134a R404A R407C	R22 R134a R404A	R410A	R22 R134a R404A R407C	R410A	R12 R22 R502	R134a R404A R407C R507	R410A	R12 R22 R502	R134a R404A R407C R507	R22 R134a R404A	R134a
Gauge High Pressure /Manomètre HP /+HD Manometer													
Item /Réf /Teilnr.	RGGL	RGFL	RGVL	RGOL	RGJL	RGAL	RGNL	RGKL	RGEL	RGQL	RGWL	RGUL	RGLL
Gauge High Pressure /Manomètre HP /+HD Manometer													
Item /Réf /Teilnr.	RGGH	RGFH	RGVH	RGOH	RGJH	RGAH	RGNH	RGKH	RGEH	RGQH	RGWH	RGUH	RGLH



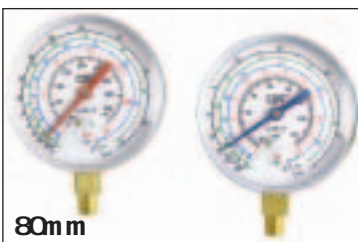
68mm

- No-flutter gauge design
- Easy to read color coded dials
- Durable metal casing
- Front calibration access port
- High impact pop-in lexan lens
- 1/8" NPT brass connection



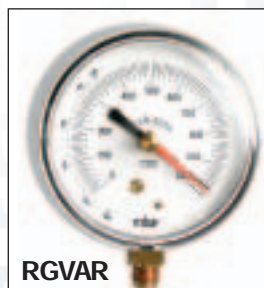
Color coded dials

Calibration access port



80mm

- Extra large easy to read scales
- No-flutter gauge design
- Durable metal casing
- Front calibration access port
- High impact pop-in lexan lens
- 1/8" NPT brass connection



Vacuum gauge  
0-1000 MBAR  
1/8" NPT Connection

RGVAR