

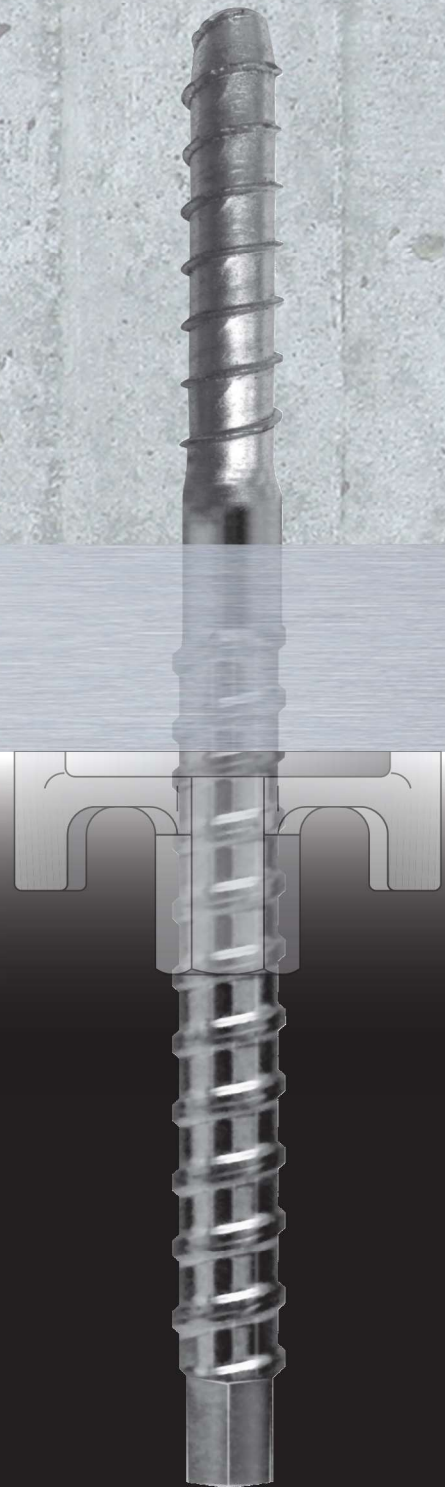
System description

BETOMAX® K-TEC-3s®

## Temporary fastening with a B15 thread

Enables easy onside formwork  
towards exiting concrete or rocks.  
Also suitable for machine fastening.

**K-TEC-3s®**  
**SELF-SCISSORING-SCREW**



*systems*  
**BETOMAX®**

...always the right solution.

# K-TEC-3s® from BETOMAX®

## Ingeniously and simple

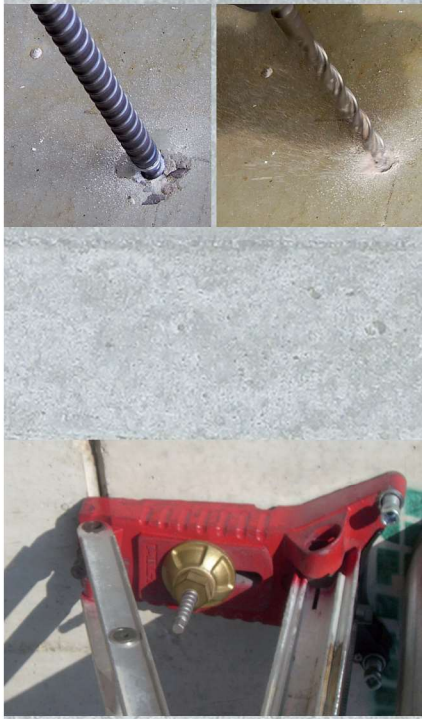
Schematic representation

BETOMAX® ranks among the leading suppliers of anchoring technology systems and components. It seeks to facilitate especially efficient and safe building practices, as illustrated by the countless domestic and international construction projects that have used BETOMAX® components to date.

The new K-TEC-3s® concrete anchor bolt from BETOMAX® introduces a new generation of concrete screws with a combination thread. K-TEC-3s® from BETOMAX® does not need any anchoring, but intersects with the concrete, independently and positively, K-TEC-3s® from BETOMAX® is reusable and combines the advantages of temporary machine fastening by means of a coarse thread with the advantages of an intersecting concrete screw.

## Supreme simplicity for enhanced benefits.

- Numerous applications**  
Suitable for all temporary fastening requirements for low to medium loads, e.g. for fastening machines such as core drilling and concrete finishing machines etc. It's also suitable for fastening of outside formwork towards existing concrete or rocks.
- Both: Rugged B15 formwork tie thread**  
Facilitates the use of all types of screwed fastening: Kipp B15 with hex nut, waler wing nut or similar
- And: High-strength, self-tapping special thread**  
For reliable, positive anchoring in the concrete
- Easy procedure**  
Supremely simple system with minimal number of components
- Massive saving of time**  
Drilled hole is recommended to be cleaned with brush or air; no additional work procedures
- For installing close to edge and to each other**  
No plugs, no expansion
- Resists high loads**  
Thanks to perfect positive fit in the concrete
- Minimal tool use**  
A rechargeable screwdriver is recommended (min. torque moment = 55 Nm, max. torque moment = 600 Nm)
- Very simple inspection**  
Check the hole diameter and depth, and ensure that the bolt is tight
- Can be reused**  
Based on the nature of the substrate, up to 20 setting operations are possible; a simple visual check can be made through markings caused by wear and tear and with the included gauge ring.

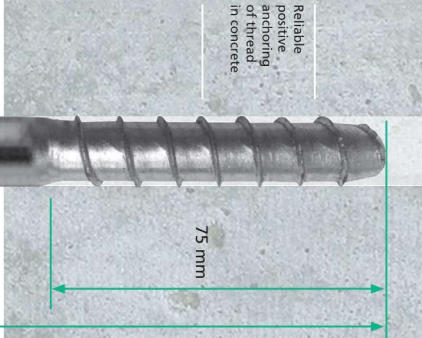


### Supreme simplicity:

1

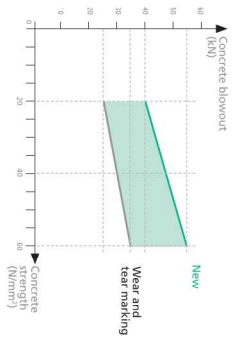


2 only two steps!



To facilitate reuse, the BETOMAX® K-TEC-3s® is supplied in a practical casing. (Only for order length 230 mm and 280 mm.)

### K-TEC-3s® blowout values



Kipp B15 with 46 mm hex nut

A simple visual check can be made with the included gauge ring.



Wear markings for visual inspection

Can be installed close together

High-strength tie rod, also suitable for repeated fastening tasks on site

Order length

B15 coarse thread for wide variety of anchoring tasks and all types of conventional construction fastening:

- Kipp B15 with an 'S' nut - Waler wing nut or similar

Shaped with flat SW13 for a rechargeable screwdriver.

15 mm

## Bill of quantities

### K-TEC-3s® concrete anchor bolt from BETOMAX® To supply and install

BETOMAX® GmbH & Co. KG  
Dyckhofstraße 1 · D-41460 Neuss  
Phone + 49 21 31 27 97 -0  
Fax + 49 21 31 27 97-70

### Anchoring technology

Item	Quantity	Product / Performance	Unit price	Ext. price
	Piece	<p>To supply and professionally install zinc plated K-TEC-3s® concrete anchor bolts in the hole locations indicated in the drawings.</p> <p>Establishing a bore hole. Screw the concrete screw in with a suitable rechargeable screw-driver. Details concerning the number and arrangement of the screws can be found in the execution plans and should be adhered to.</p> <p>In other respects, the manufacturer's application technology guidelines are to be observed.</p> <p>Please address technical queries to the service hotline of BETOMAX® GmbH &amp; Co. KG +49 2131 2797-34 and -49.</p> <p>Piece price EUR _____</p>		

Various types and designs on request

## Sales partner:

Ahlsell Sverige AB  
Platsgjutet tel: +46 582 126 00  
Prefab tel: +46 10 476 07 50  
betongkomplement@ahlsell.se  
www.ahlsell.se

Specialist inom **Betongkomplement**

**ahlsell**

### Quality assurance

BETOMAX® guarantees the constant quality of K-TEC-3s® via manufacture in its own factories, in association with similar and monitored processes and inspections.

### Delivery

Shipment of K-TEC-3s® is carried out throughout Europe by BETOMAX® Neuss or via the responsible BETOMAX® technical consultant.

### Service

You will receive technical advice and support during planning and assembly from the responsible BETOMAX® technical consultant.