

MOUNTING INSTRUCTIONS

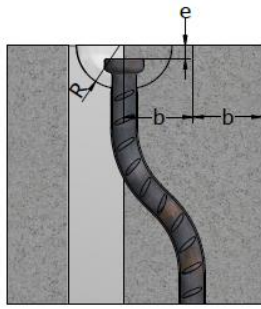


3D - LIFTING SYSTEMS | **TKSG OFFSET ANCHOR**



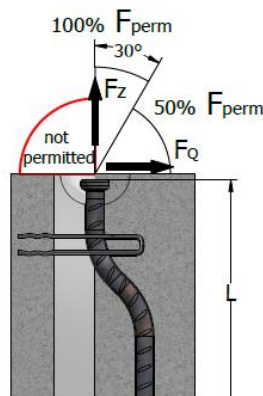
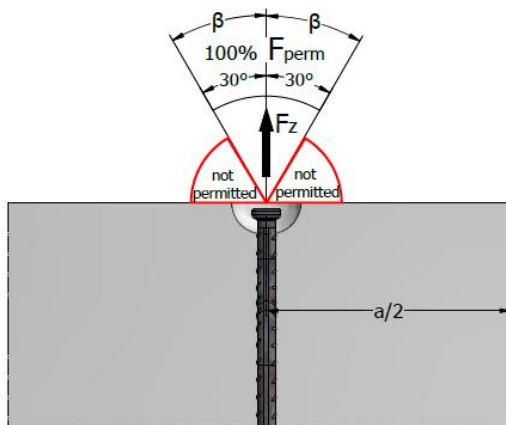
TKSG-ANCHOR ARRANGEMENT

Type TKSG Anchor Description	Load group	“R”	“e”
	[kN]	[mm]	[mm]
TKSG-025-0508	25	37	11
TKSG-050-0885	50	47	15
TKSG-075-1134	75	59	15
TKSG-100-1284	100	59	15



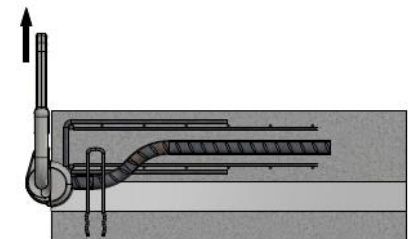
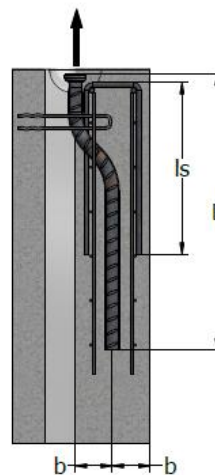
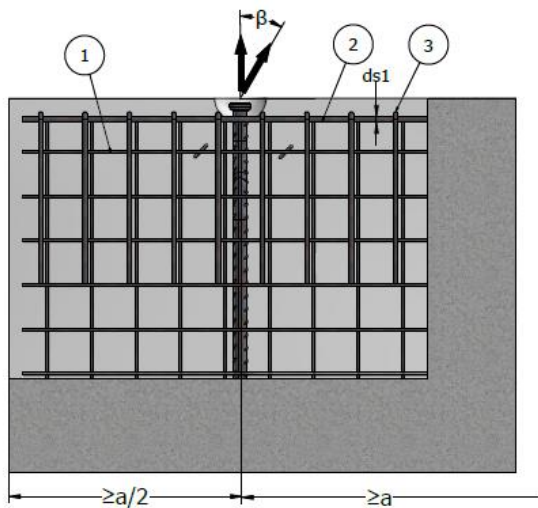
- $2xb$ = load bearing layer thickness
- e = cover to anchor head
- R = recess radius

TKSG - LOAD CAPACITY IN WALLS - ADDITIONAL REINFORCEMENTS



Angled pull with cable/chain spread of $\beta > 30^\circ$ is not permitted

Using a tilt-up table is recommended for tilt-up operations.



Using an additional sandwich hairpin anchor installed near the anchor is beneficial.

Note:


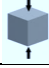
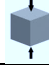

The bend radius R will be determined according to EN 1992.

The diagonal reinforcement must be placed as close as possible under the recess former and installed so it is in contact with the lifting anchor.

The reinforced zone must be $\geq 3 \times$ anchor length " L ". The two stirrups near the anchor should be installed as close as possible to the recess former.

Length $l_s = l_1 + \text{Anchor length}$

Type of anchor Symbol	Load group	Mesh reinforcement ①	Edge reinforcement B500B (both sides) ②	Stirrups - B500B ③	
				Axial pull $\beta < 30^\circ$	
			ds1	"d"	"ls"
	[kN]	[mm ² /m]	[mm]	[mm]	[mm]
TKSG-025-0508	25	2 x 100	Ø 10	Ø8	700
TKSG-050-0885	50	2 x 140	Ø 12	Ø8	850
TKSG-075-1134	75	2 x 160	Ø 12	Ø10	950
TKSG-100-1284	100	2 x 180	Ø 12	Ø10	1000

TKSG-ANCHOR – LOAD CAPACITY IN WALLS WITH ADDITIONAL REINFORCEMENTS							
Type of anchor	Load group	Wall thickness 2 x b	Load capacity				Spacing between anchors
			Axial pull F_Z $\beta < 30^\circ$		Transverse lift F_Q		
			$f_{cu} \geq 15 \text{ MPa}$ 	$f_{cu} \geq 25 \text{ MPa}$ 	$f_{cu} \geq 15 \text{ MPa}$ 	$f_{cu} \geq 25 \text{ MPa}$ 	a
	[kN]	[mm]	[kN]	[kN]	[kN]	[kN]	[mm]
TKSG-025-0508	25	80	25.0	25.0	12.5	12.5	360
TKSG-050-0885	50	100	40.9	50.0	25.0	25.0	540
		120	44.2	50.0	25.0	25.0	
		140	47.0	50.0	25.0	25.0	
		160	50.0	50.0	25.0	25.0	
TKSG-075-1134	75	120	66.0	75.0	37.5	37.5	610
		140	70.0	75.0	37.5	37.5	
		160	75.0	75.0	37.5	37.5	
TKSG-100-1284	100	140	100.0	100.0	50.0	50.0	720

CONTACT



TERWA is the global supplier for precast and construction solutions with multiple offices around the world. With all our staff, partners and agents, we are happy to provide all construction and precast companies who work in the building industry with full service and 100% support.

TERWA CONSTRUCTION GROUP

Terwa Construction Netherlands (HQ)

Global Sales & Distribution

Kamerlingh Onneslaan 1-3
3401 MZ IJsselstein
The Netherlands

T +31-(0)30 699 13 29

F +31-(0)30 220 10 77

E info@terwa.com

Terwa Construction Central East Europe

Sales & Distribution

Strada Sânzieni
507075 Ghimbav
Romania

T +40 372 611 576

E info@terwa.com

Terwa Construction Poland

Sales & Distribution

Ul. Cicha 5 lok. 4
00-353 Warszawa
Poland

E info@terwa.com

Terwa Construction India & Middle East

Sales & Distribution

India
T +91 89 687 000 41
E info@terwa.com

Terwa Construction China

Sales & distribution

5F 504, No. 101 Chuanchang road
PRC, 200032, Shanghai
China

E info@terwa.com

ALL SPECIFICATIONS CAN BE CHANGED WITHOUT PREVIOUS NOTICE.

DISCLAIMER

Terwa B.V. is not liable for deviations due to wear of the products it has delivered. Neither is Terwa B.V. liable for damage due to inaccurate and/or improper handling and use of the products it has delivered and/or use of same for purposes other than those intended.

Terwa B.V.'s responsibility is furthermore limited in accordance with article 13 of the "Metaalunie" conditions, which are applicable for all Terwa B.V. deliveries. The user is responsible for ensuring compliance with all applicable copyright laws. Without limiting the rights under copyright, no part of this documentation may be reproduced, stored in or introduced into a retrieval system, or transmitted in any form or by any means (electronic, mechanical, photocopying, recording, or otherwise), or for any purpose, without the express written permission of Terwa B.V.