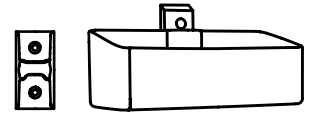
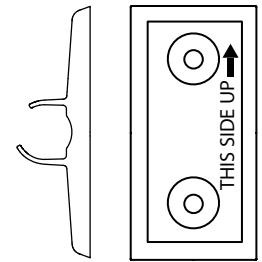


Description of mounting for Shower Shelf FJT-03

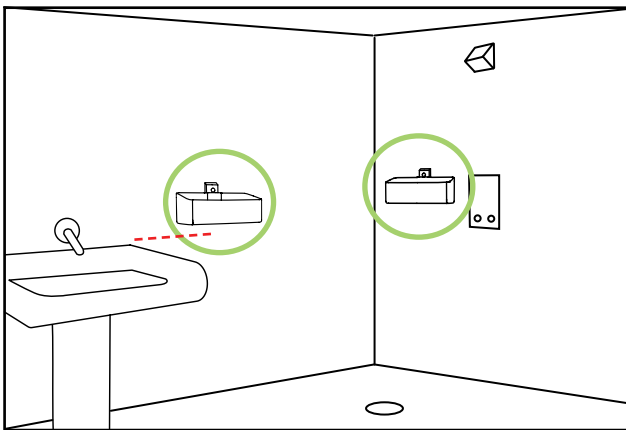
The following approach should be taken when mounting the Shower Shelf FJT-03 in forensic psychiatric care facilities, other health care facilities and correctional units. The shower shelf consists of two parts, a wall bracket and a shelf for storing schampoo etc. When the bracket is mounted on the wall the shelf is snapped to the bracket and the shower shelf is ready for use.



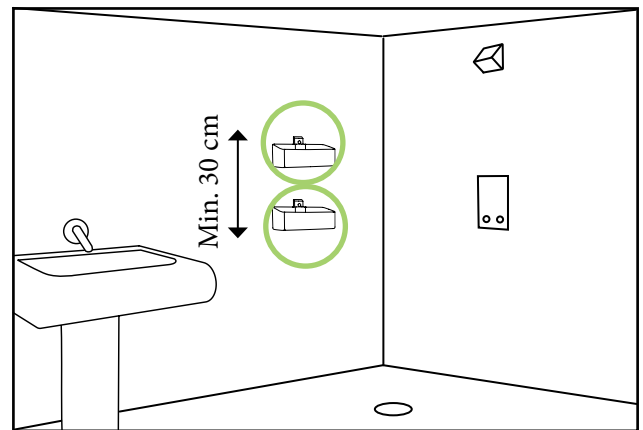
- The bracket must be mounted with two safety screws with a flat bottomed head. The diameter of the screw head should be from 9.5 to 10 mm to fit the countersunk hole. The diameter of the screw threaded portion shall not exceed 5 mm in diameter, this is the diameter of the holes. C-C between the holes is 40 mm. Make sure the screw has been pulled all the way to the bottom of the countersunk part. The installation must be done so that the bracket fits snugly to the wall surface it is mounted to. Uneven surfaces must be avoided. Check that no objects, rope or string can be inserted between the bracket and the wall, if so, the bracket is not correctly mounted. Note that the bracket should be mounted with the short end of the clamps up. Follow the instructions on the back of the bracket. See illustration to the right.



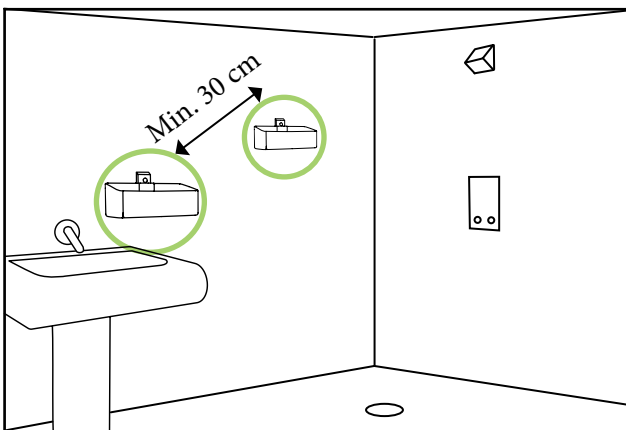
- The shower shelf shall not be mounted along the same horizontal line as an object with a supportive surface that is closer than 30 cm. See illustration 1.
- When mounting two or more shower shelves on the same wall the mounting description in illustration 2, 3 and 4 must be followed. When installing two shower shelves on the same wall they should be mounted in a vertical or diagonal line of at least 30 centimeters between the shower shelves. See Figures 2 and 3. The shower shelves must not be mounted along the same horizontal line.



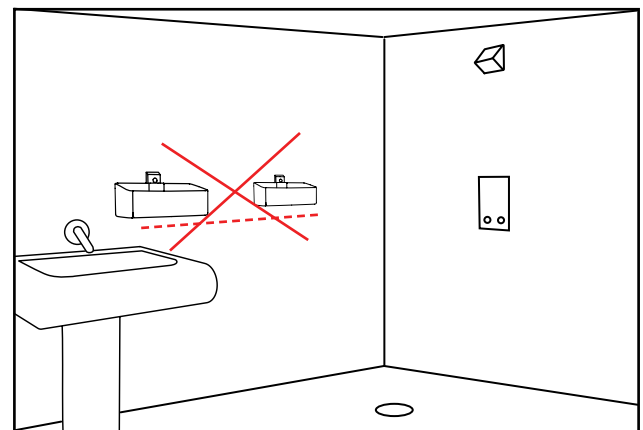
Ill. 1, correct placement of the shower shelf.



Ill. 2, correct placement of the shower shelf.



Ill. 3, correct placement of the shower shelf.



Ill. 4, wrong placement of the shower shelf.

- Should any of the mounting instructions not be done according the description, the safety tests conducted by SP Technical Research Institute of Sweden can not be met.