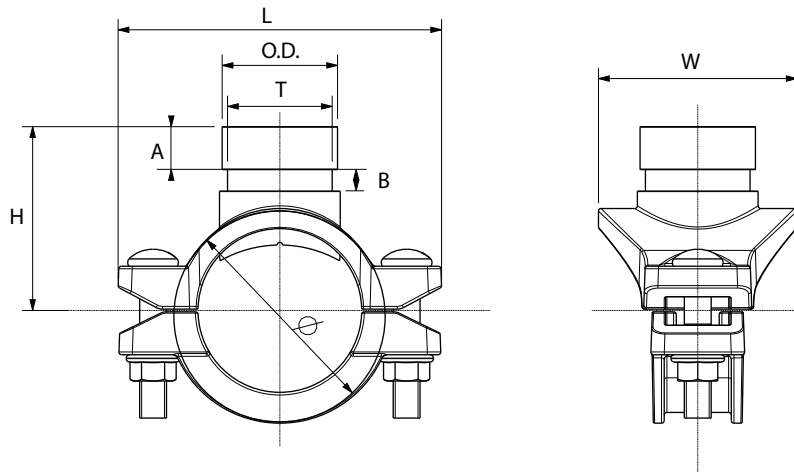




Grooved mechanical tees may be used for any tee connection where a grooved outlet is headed. They may be converted into a cross when necessary**



Material specifications

Housing: ductile iron conform to ASTM A536 GR65-45-12

Coating

- Hot dip galvanized
- Red paint coating RAL 3000, EPD Epoxy coating

Rubber gasket: EPDM gaskets dispose of the international certifications and have undergone the aging test at 110C/230°F during a period of 45 days/1080 hours and the frozen test at -40°C/-40°F during a period of 4 days/96 hours

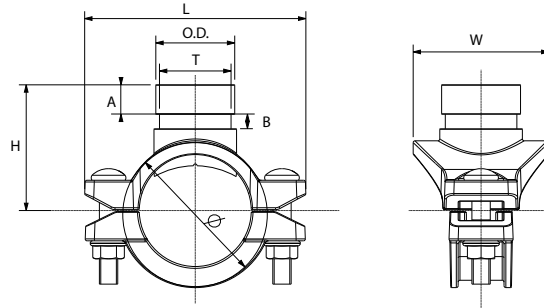
Bolts and nuts: see technical datasheet bolts and nuts

Working pressure

300 PSI/2068 kPa

General notes:

- Pressure ratings listed are CWP (cold working pressure) or maximum working pressure within the service temperature range of the gasket used in the coupling. This rating may occasionally differ from maximum working pressure listed and/or approved by UL and/or FM, as testing conditions and test pipes differ. For more information, please contact info@profitings.eu.
- Maximum working pressure listed is total of internal and external pressures, based on standard weight (ANSI) steel pipe and standard roll or cut groove, in accordance with Profit specifications. For more information, please contact info@profitings.eu.
- For one time field test only, the maximum joint working pressure may be increased one and a half times the figure shown.
- Warning: Piping systems must always be depressurized and drained before attempting disassembly and/or removal of any components.
- Profit reserves the right to change specifications, designs and/or standard equipment without notice and without incurring in any obligations.
- Profit red coated products are intended for piping with indoor application (EN 12944-2 corrosivity category C1 & C2). For outdoor installations near the sea (corrosivity category C3) we advise to use our hot dip galvanized couplings and fittings. For application in corrosivity category C4 (higher salinity climate) or higher, please contact info@profitings.eu.
- We strongly advise to always store our products in closed and dry warehouses.
- **Mechanical cross not FM and UL certified

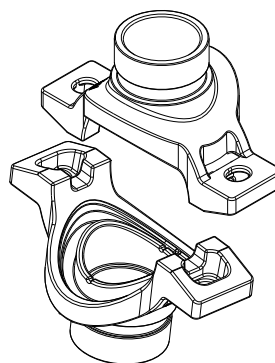


Reference		Nominal size Run x reducing outlet		Pipe Ø O.D. - T	Grooved mechanical tee dimensions						Working pressure	Hole cut*	Bolt size	Socket wrench	Bolt torque	Weight
Red	Galva	NPS inch	DN mm	mm	Ø mm	L mm	H mm	W mm	A mm	B mm	PSI	mm	d1xL	mm	N*M	Kg
GMGR	GMGG	2 - 1¼	50-32	60,3 x 42,4	85	120	70	72	15,9	7,9	300	46+1	M10x50	15	44-54	0,91
GMGR	GMGG	2 - 1½	50-40	60,3 x 48,3	85	120	70	79	15,9	7,9	300	46+1	M10x50	15	44-54	0,94
GMGR	GMGG	2½ - 1¼	65-32	76,1 x 42,4	99	139	73	72	15,9	7,9	300	46+1	M10x60	15	44-54	1,02
GMGR	GMGG	2½ - 1½	65-40	76,1 x 48,3	99	139	75	79	15,9	7,9	300	53+1	M10x60	15	44-54	1,07
GMGR	GMGG	3 - 1¼	80-32	88,9 x 42,4	113	155	82	72	15,9	7,9	300	46+1	M10x60	15	44-54	1,12
GMGR	GMGG	3 - 1½	80-40	88,9 x 48,3	113	155	82	79	15,9	7,9	300	53+1	M10x60	15	44-54	1,14
GMGR	GMGG	3 - 2	80-50	88,9 x 60,3	113	155	82	90	15,9	7,9	300	64+1	M10x60	15	44-54	1,35
GMGR	GMGG	4 - 1¼	100-32	114,3 x 42,4	139	181	95,5	72	15,9	7,9	300	46+1	M12x70	18	90-100	1,37
GMGR	GMGG	4 - 1½	100-40	114,3 x 48,3	139	181	95,5	79	15,9	7,9	300	53+1	M12x70	18	90-100	1,41
GMGR	GMGG	4 - 2	100-50	114,3 x 60,3	139	181	95,5	90	15,9	7,9	300	64+1	M12x70	18	90-100	1,53
GMGR	GMGG	4 - 2½	100-65	114,3 x 76,3	139	181	99	117	15,9	7,9	300	70+1	M12x70	18	90-100	1,86
GMGR	GMGG	4 - 3	100-80	114,3 x 88,9	139	181	96	130	15,9	7,9	300	89+1	M12x70	18	90-100	2,04
GMGR	GMGG	5 - 2	125-50	139,7 x 60,3	167	212	110	90	15,9	7,9	300	64+1	M12x75	18	200-230	1,96
GMGR	GMGG	5 - 2½	125-65	139,7 x 76,1	168	212	113	117	15,9	7,9	300	70+1	M12x75	18	200-230	2,22
GMGR	GMGG	6 - 1¼	150-32	168,3 x 42,4	194	248	125	72	15,9	7,9	300	46+1	M16x85	24	200-230	2,51
GMGR	GMGG	6 - 1½	150-40	168,3 x 48,3	194	248	125	79	15,9	7,9	300	53+1	M16x85	24	200-230	2,53
GMGR	GMGG	6 - 2	150-50	168,3 x 60,3	194	248	126	90	15,9	7,9	300	64+1	M16x85	24	200-230	2,54
GMGR	GMGG	6 - 2½	150-65	168,3 x 76,1	194	248	127	117	15,9	7,9	300	70+1	M16x85	24	200-230	2,87
GMGR	GMGG	6 - 3	150-80	168,3 x 88,9	194	248	127	136	15,9	7,9	175	89+1	M16x85	24	200-230	3,00
GMGR	GMGG	6 - 4	150-100	168,3 x 114,3	194	248	127	162	15,9	9,5	175	114+1	M16x85	24	200-230	3,47
GMGR	GMGG	8 - 2½	200-65	219,1 x 76,1	248	311	154	117	15,9	7,9	300	70+1	M16x85	24	200-230	3,68
GMGR	GMGG	8 - 3	200-80	219,1 x 88,9	248	311	154	136	15,9	7,9	300	89+1	M16x85	24	200-230	3,88

TYVEK LABEL EXAMPLE

Mechanical tee	
GMG (Grooved)	
4-2½/2	5-2½/2
6-2½/2	8-2½/2
Hole cut dimension 70(+1mm)	

- * Please note that the **correct hole cut dimension** is mentioned:
- on the Tyvek label which is attached to the product itself
 - on the document called 'Hole cut dimensions', which is added to each delivery from our warehouse Profit Europe, Belgium. This document is attached to the outside of the first box in a plastic pouch with reference 'Documents enclosed'



Mechanical cross** conversion				
	Main pipe diameter		Maximum outlet mechanical cross	
Inch	DN	OD	DN	OD
2,5	65	76,1	32	42,4
3	80	88,9	40	48,3
4	100	114,3	50	60,3
5	125	139,7	65	76,1
6	150	168,3	80	89,9
8	200	219,1	100	114,3

General notes:

- Pressure ratings listed are CWP (cold working pressure) or maximum working pressure within the service temperature range of the gasket used in the coupling. This rating may occasionally differ from maximum working pressure listed and/or approved by UL and/or FM, as testing conditions and test pipes differ. For more information, please contact info@profitfittings.eu.
- Maximum working pressure listed is total of internal and external pressures, based on standard weight (ANSI) steel pipe and standard roll or cut groove, in accordance with Profit specifications. For more information, please contact info@profitfittings.eu.
- For one time field test only, the maximum joint working pressure may be increased one and a half times the figure shown.
- Warning: Piping systems must always be depressurized and drained before attempting disassembly and/or removal of any components.
- Profit reserves the right to change specifications, designs and/or standard equipment without notice and without incurring in any obligations.
- Profit red coated products are intended for piping with indoor application (EN 12944-2 corrosivity category C1 & C2). For outdoor installations near the sea (corrosivity category C3) we advise to use our hot dip galvanized couplings and fittings. For application in corrosivity category C4 (higher salinity climate) or higher, please contact info@profitfittings.eu.
- We strongly advise to always store our products in closed and dry warehouses.
- **Mechanical cross not FM and UL certified