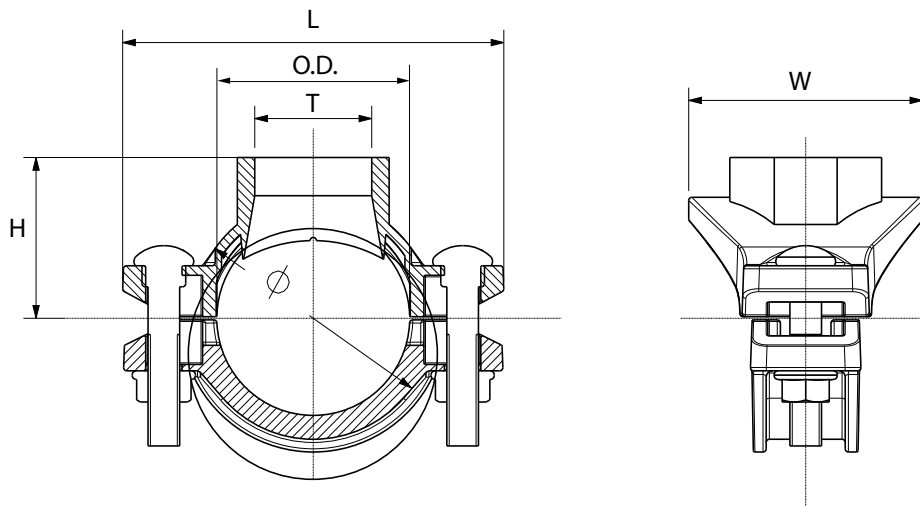


THREADED BSPT OUTLET



Threaded mechanical tees may be used for any tee connection where a threaded outlet is headed. Some sizes may be converted into a cross when necessary**



Material specifications

Housing: ductile iron conform to ASTM A536 GR65-45-12

Coating

- Hot dip galvanized
- Red paint coating RAL 3000, EPD Epoxy coating

Rubber gaskets: EPDM gaskets dispose of the international certifications and have undergone the aging test at 110°C/230°F during a period of 45 days/1080 hours and the frozen test at -40°C/-40°F during a period of 4 days/96 hours

Bolts and nuts: see technical datasheet bolts and nuts

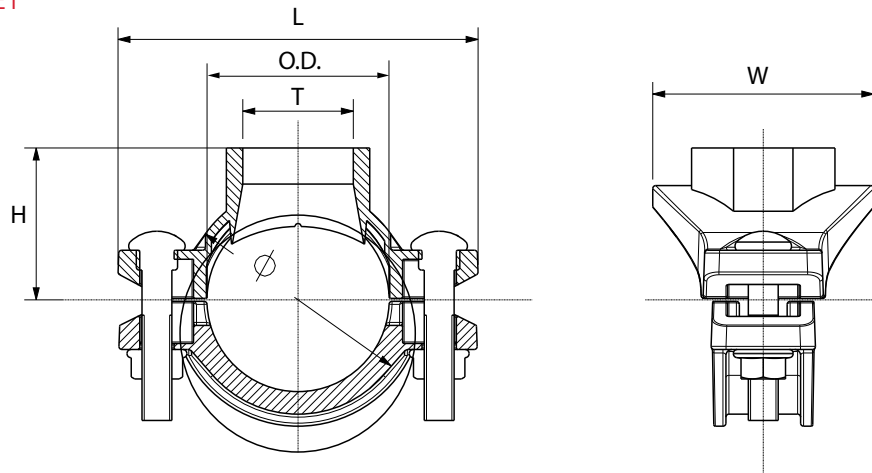
Working pressure

300 PSI/2068 kPa

General notes:

- Pressure ratings listed are CWP (cold working pressure) or maximum working pressure within the service temperature range of the gasket used in the coupling. This rating may occasionally differ from maximum working pressure listed and/or approved by UL and/or FM, as testing conditions and test pipes differ. For more information, please contact info@profitings.eu.
- Maximum working pressure listed is total of internal and external pressures, based on standard weight (ANSI) steel pipe and standard roll or cut groove, in accordance with Profit specifications. For more information, please contact info@profitings.eu.
- For one time field test only, the maximum joint working pressure may be increased one and a half times the figure shown.
- Warning: Piping systems must always be depressurized and drained before attempting disassembly and/or removal of any components.
- Profit reserves the right to change specifications, designs and/or standard equipment without notice and without incurring in any obligations.
- Profit red coated products are intended for piping with indoor application (EN 12944-2 corrosivity category C1 & C2). For outdoor installations near the sea (corrosivity category C3) we advise to use our hot dip galvanized couplings and fittings. For application in corrosivity category C4 (higher salinity climate) or higher, please contact info@profitings.eu.
- We strongly advise to always store our products in closed and dry warehouses.
- **Mechanical cross not FM and UL certified

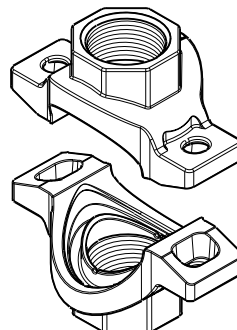
THREADED BSPT OUTLET



Reference		Nominal size Run x Reducing outlet		Pipe Ø O.D.-T	Threaded mechanical tee dimensions				Hole cut*	Bolt size	Socket wrench	Bolt torque	Weight
Red	Galva	NPS inch	DN mm	mm	L mm	H mm	W mm	Ø mm	mm	d1xL	mm	N*M	kg
GMDR	GMDG	2-1¼	50-32	60,3 x 42,4	120	55	72	85	46+1	M10x50	15	44-54	0,81
GMDR	GMDG	2-1½	50-40	60,3 x 48,3	120	63	79	85	46+1	M10x50	15	44-54	0,90
GMDR	GMDG	2½-1¼	65-32	76,1 x 42,4	139	60	72	99	46+1	M10x60	15	44-54	0,91
GMDR	GMDG	2½-1½	65-40	76,1 x 48,3	139	60	79	99	53+1	M10x60	15	44-54	0,94
GMDR	GMDG	3-1	80-25	88,9 x 33,7	155	67	64	113	38+1	M10x60	15	44-54	0,99
GMDR	GMDG	3-1¼	80-32	88,9 x 42,4	155	67	72	113	46+1	M10x60	15	44-54	1,04
GMDR	GMDG	3-1½	80-40	88,9 x 48,3	155	67	79	113	53+1	M10x60	15	44-54	1,10
GMDR	GMDG	3-2	80-50	88,9 x 60,3	155	67	90	113	64+1	M10x60	15	44-54	1,23
GMDR	GMDG	4-1	100-25	114,3 x 33,7	181	79	64	139	38+1	M12x70	18	90-100	1,22
GMDR	GMDG	4-1¼	100-32	114,3 x 42,4	181	79	72	139	46+1	M12x70	18	90-100	1,24
GMDR	GMDG	4-1½	100-40	114,3 x 48,3	181	79	79	139	53+1	M12x70	18	90-100	1,31
GMDR	GMDG	4-2	100-50	114,3 x 60,3	181	79	90	139	64+1	M12x70	18	90-100	1,40
GMDR	GMDG	4-2½	100-65	114,3 x 76,1	181	100	117	138	70+1	M12x70	18	90-100	1,96
GMDR	GMDG	6-1¼	150-32	168,3 x 42,4	248	106	72	196	46+1	M16x85	24	200-230	2,36
GMDR	GMDG	6-1½	150-40	168,3 x 48,3	248	106	79	196	53+1	M16x85	24	200-230	2,36
GMDR	GMDG	6-2	150-50	168,3 x 60,3	248	106	90	196	64+1	M16x85	24	200-230	2,43
GMDR	GMDG	6-2½	150-65	168,3 x 76,1	248	128	117	194	70+1	M16x85	24	200-230	2,34

TYVEK LABEL EXAMPLE

Mechanical tee GMD (Threaded)	
2-11/4	3-11/4
2-11/2	4-11/4
21/2-11/4	6-11/4
Hole cut dimension 46(+1mm)	



- * Please note that the **correct hole cut dimension** is mentioned:
- on the Tyvek label which is attached to the product itself
 - on the document called 'Hole cut dimensions', which is added to each delivery from our warehouse Profit Europe, Belgium. This document is attached to the outside of the first box in a plastic pouch with reference 'Documents enclosed'

Mechanical cross** conversion				
Inch	Main pipe diameter		Maximum outlet mechanical cross	
	DN mm	O.D. mm	DN mm	Thread size T
2½	65	76,1	32	1¼"
3	80	88,9	40	1½"
4	100	114,3	50	2"
6	150	168,3	80	3"

General notes:

- Pressure ratings listed are CWP (cold working pressure) or maximum working pressure within the service temperature range of the gasket used in the coupling. This rating may occasionally differ from maximum working pressure listed and/or approved by UL and/or FM, as testing conditions and test pipes differ. For more information, please contact info@profitings.eu.
- Maximum working pressure listed is total of internal and external pressures, based on standard weight (ANSI) steel pipe and standard roll or cut groove, in accordance with Profit specifications. For more information, please contact info@profitings.eu.
- For one time field test only, the maximum joint working pressure may be increased one and a half times the figure shown.
- Warning: Piping systems must always be depressurized and drained before attempting disassembly and/or removal of any components.
- Profit reserves the right to change specifications, designs and/or standard equipment without notice and without incurring in any obligations.
- Profit red coated products are intended for piping with indoor application (EN 12944-2 corrosivity category C1 & C2). For outdoor installations near the sea (corrosivity category C3) we advise to use our hot dip galvanized couplings and fittings. For application in corrosivity category C4 (higher salinity climate) or higher, please contact info@profitings.eu.
- We strongly advise to always store our products in closed and dry warehouses.
- **Mechanical cross not FM and UL certified